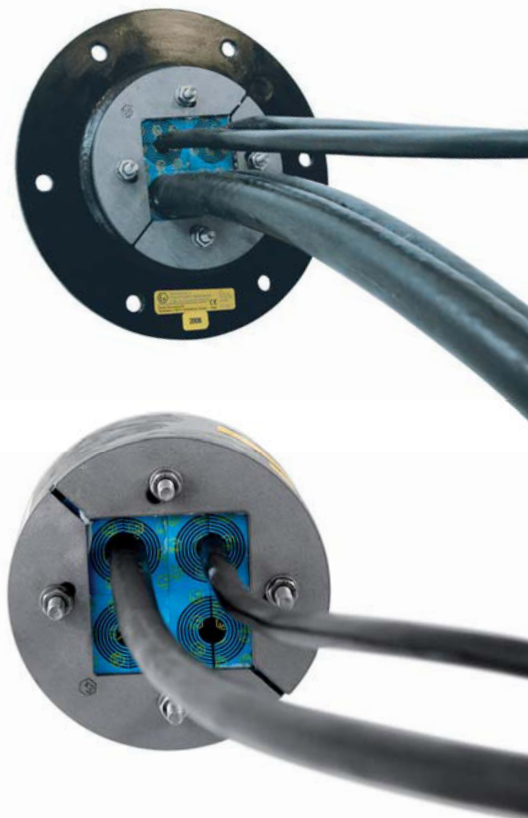


R Ex frame



EN The Roxtec R Ex is a round expansion frame with a square packing space. The kit includes a sleeve. The sleeves are available in two versions intended for welding or bolting into place. Sleeves with flange include gasket. The compression is integrated in the frame. The frame is used together with RM Ex modules. R Ex frames are supplied with a net installed (except R 75 Ex) on the back side as help during horizontal installations.

FR Le cadre R Ex Roxtec est une bague circulaire avec une ouverture carrée. Le kit inclut une douille. La bague est disponible en deux versions pour des installations soudées ou boulonnées. Les douilles avec épaulement sont équipées d'un joint plat. Le système de compression est intégré à la bague qui s'utilise avec des modules RM Ex. Les bagues R Ex sont livrées avec un filet protecteur situé à l'arrière (sauf R75 Ex) pour faciliter des installations horizontales.

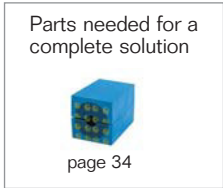
DE Der Roxtec R Ex ist ein Expansionsrahmen mit einer viereckigen Öffnung. Das Set beinhaltet ein Mantelrohr. Das Mantelrohr ist in zwei Ausführungen erhältlich: zum Einschweißen oder Aufschrauben. Die Mantelrohre mit Flansch haben eine Dichtung. Der Rahmen verfügt über integrierte Spannschläge und wird mit RM Ex Modulen ausgefüllt. R Ex Rahmen werden mit einem StopNet (außer R 75 Ex) auf der Rückseite geliefert, das zum Schutz beim horizontalen Einbau dient.

ES El R Ex de Roxtec es un marco de expansión redondo con una abertura cuadrada. El kit incluye un collarín. Los collarines están disponibles en dos versiones, para soldar o atornillar en el lugar de instalación. Los collarines de expansión tienen una culata de goma. La compresión está integrada en el marco y se completa con módulos RM Ex. Los marcos R Ex se suministran con una red (excepto el R 75 Ex) en su parte posterior como medida de protección en las instalaciones horizontales.

IT Il telaio R Ex di Roxtec è un telaio ad espansione circolare con un'apertura quadrata. Il kit include il manicotto. I manicotti sono disponibili in due versioni a seconda dell'applicazione (a saldare o ad imbullonare). La compressione è integrata nel telaio che va utilizzato insieme ai moduli RM Ex. I telai R vengono forniti con una rete installata sul fondo (eccetto R-75 Ex) come supporto durante le installazioni orizzontali.

R...W Ex including sleeve for welding

Bague R...W Ex avec douille pour installations soudées | R...W Ex, inkl. Mantelrohr zum Einschweißen | R...W Ex incl. collarín para soldar | Telai R, per applicazioni a saldare componenti galvanizzati



R 100 W Ex AISI 316/primed
EXWR00001002112

R 100 W Ex AISI 316/AISI 316
EXWR00001002112

For information about other frame sizes that are not standard, please contact your local Roxtec supplier or e-mail: info@roxtec.com

Cert. No: IECEx NEM 12.0015U, Nemko 12ATEX1279U ATEX: II 2G Ex e IIC Gb / II 2D Ex tb IIIC Db, IP Class: 66/68, Temp: -60 — +80°C

	Espace de remplissage (mm)	Dim. Extérieures ØxD (mm) ØxD (pouces)			Poids (kg) (lb)		N° d'article
FR	Bague						
DE	Belegraum (mm)	Außenmaße ØxD (mm) ØxD (in.)			Gewicht (kg) (lb)		Art.-Nr.
ES	Espacio útil de sellado (mm)	Dim. externas ØxD (mm) ØxD (pulgadas)			Peso (kg) (libra)		N° art.
IT	Spazio di riempimento (mm)	Dimensioni esterne ØxD (mm) ØxD (in)			Peso (kg) (lb)		Art. Nr.
EN	Packing space (mm)	External dimensions ØxD (mm) ØxD (in)		Sleeve SLR*	Weight (kg) (lb)		Art. No.
with primed mild steel sleeve							
	R 75 W Ex AISI 316/primed	40 x 40	75 x 70	2.953 x 2.756	75	1.3 2.866	EXWR00000752112
	R 100 W Ex AISI 316/primed	60 x 60	100 x 70	3.937 x 3.346	100	1.7 3.748	EXWR00001002112
	R 125 W Ex AISI 316/primed	80 x 80	125 x 70	4.921 x 2.756	125	2.7 5.952	EXWR00001252112
	R 150 W Ex AISI 316/primed	90 x 90	150 x 70	5.906 x 2.756	150	3.5 7.716	EXWR00001502112
	R 200 W Ex AISI 316/primed	120 x 120	200 x 70	7.874 x 2.756	200	5.3 11.684	EXWR00002002112
with acid-proof stainless steel sleeve							
	R 75 W Ex AISI 316/AISI 316	40 x 40	75 x 70	2.953 x 2.756	75	1.3 2.866	EXWR00000752121
	R 100 W Ex AISI 316/AISI 316	60 x 60	100 x 70	3.937 x 3.346	100	1.7 3.748	EXWR00001002121
	R 125 W Ex AISI 316/AISI 316	80 x 80	125 x 70	4.921 x 2.756	125	2.7 5.952	EXWR00001252121
	R 150 W Ex AISI 316/AISI 316	90 x 90	150 x 70	5.906 x 2.756	150	3.5 7.716	EXWR00001502121
	R 200 W Ex AISI 316/AISI 316	120 x 120	200 x 70	7.874 x 2.756	200	5.3 11.684	EXWR00002002121

* More information about sleeves on page 68

R...B Ex including sleeve for bolting

Bague R...B Ex avec douille pour installations boulonnées » R...B Ex, inkl. Mantelrohr zum Aufschrauben » R...B Ex incl. collarín para atornillar » Telaio R, per applicazioni ad imbullonare componenti galvanizzati



Parts needed for a complete solution



page 34

R 100 B Ex AISI 316/primed
EXBR00001002112

R 100 B Ex AISI 316/AISI 316
EXBR00001002121

For information about other frame sizes that are not standard, please contact your local Roxtec supplier or e-mail: info@roxtec.com

Cert. No: IECEx NEM 12.0014X, Nemko 12ATEX1278X ATEX: II 2G Ex e IIC Gb / II 2D Ex tb IIIC Db, IP Class: 66/68, Temp: -60 — +80°C

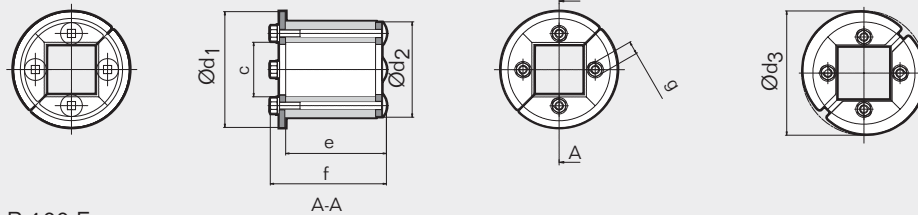
	Espace de remplissage (mm)	Dim. Extérieures ØxD (mm) ØxD (pouces)			Poids (kg) (lb)		N° d'article
FR	Bague						
DE	Belegraum (mm)	Außenmaße ØxD (mm) ØxD (in.)			Gewicht (kg) (lb)		Art.-Nr.
ES	Espacio útil de sellado (mm)	Dim. externas ØxD (mm) ØxD (pulgadas)			Peso (kg) (libra)		N° art.
IT	Spazio di riempimento (mm)	Dimensioni esterne ØxD (mm) ØxD (in)			Peso (kg) (lb)		Art. Nr.
EN	Packing space (mm)	External dimensions ØxD (mm) ØxD (in)		Sleeve SLFR*	Weight (kg) (lb)		Art. No.
	with primed mild steel sleeve						
	R 75 B Ex AISI 316/primed	40 x 40	75 x 70	2.953 x 2.756	75	1.8 3.968	EXBR00000752112
	R 100 B Ex AISI 316/primed	60 x 60	100 x 70	3.937 x 3.346	100	2.4 5.291	EXBR00001002112
	R 125 B Ex AISI 316/primed	80 x 80	125 x 70	4.921 x 2.756	125	3.5 7.716	EXBR00001252112
	R 150 B Ex AISI 316/primed	90 x 90	150 x 70	5.906 x 2.756	150	4.3 9.480	EXBR00001502112
	R 200 B Ex AISI 316/primed	120 x 120	200 x 70	7.874 x 2.756	200	6.4 14.110	EXBR00002002112
	with acid-proof stainless steel sleeve						
	R 75 B Ex AISI 316/AISI 316	40 x 40	75 x 70	2.953 x 2.756	75	1.8 3.968	EXBR00000752121
	R 100 B Ex AISI 316/AISI 316	60 x 60	100 x 70	3.937 x 3.346	100	2.4 5.291	EXBR00001002121
	R 125 B Ex AISI 316/AISI 316	80 x 80	125 x 70	4.921 x 2.756	125	3.5 7.716	EXBR00001252121
	R 150 B Ex AISI 316/AISI 316	90 x 90	150 x 70	5.906 x 2.756	150	4.3 9.480	EXBR00001502121
	R 200 B Ex AISI 316/AISI 316	120 x 120	200 x 70	7.874 x 2.756	200	6.4 14.110	EXBR00002002121

* More information about sleeves on page 68

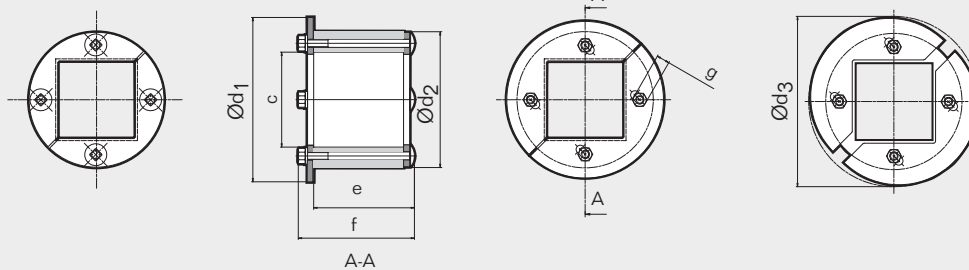
R Ex frame, technical information

Bague R Ex, informations techniques | R Ex Rahmen, technische Daten | Marco R Ex, información técnica | Telaio R Ex, informazioni tecniche

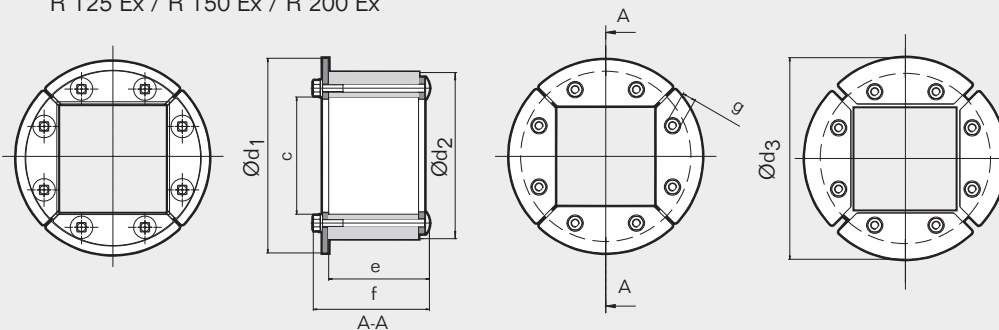
R 75 Ex



R 100 Ex



R 125 Ex / R 150 Ex / R 200 Ex



	R 75 Ex		R 100 Ex		R 125 Ex		R 150 Ex		R 200 Ex	
Pos	(mm)	(in)	(mm)	(in)	(mm)	(in)	(mm)	(in)	(mm)	(in)
c (□)	40	1.575	60	2.362	80	3.150	90	3.543	120	4.724
e	72	2.835	75	2.953	75	2.953	75	2.953	75	2.953
f	85	3.346	85	3.346	85	3.346	91	3.583	91	3.583
g	*	*	*	*	**	**	***	***	***	***
Ød ₁	85	3.346	115	4.528	142	5.591	165	6.496	215	8.465
Ød ₂	75	2.953	100	3.937	125	4.921	150	5.906	200	7.874
Ød ₃	91	3.583	125	4.921	148	5.827	171	6.732	223	8.780

* SW10 mm (4x) / SW0.394" (4x) ** SW10 mm (8x) / SW0.394 (8x) *** SW13 mm (8x) / SW0.512 (8x)

f = Dimension with front fittings in outer position
 Dimension avec les ferrures-avants métalliques en position écartée
 Außenabmessungen der Beschläge
 Medidas con los los componentes delanteros en posición externa
 Dimensioni con i listelli frontali in posizione esterna

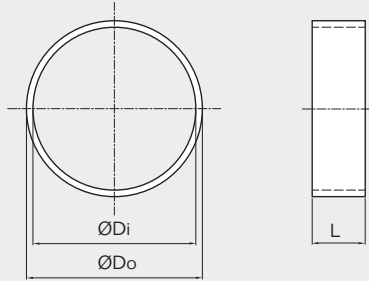
Note: All dimensions are nominal values
 N.B. : toutes les dimensions sont nominales
 Achtung: alle angegebenen Maße sind Nominalwerte
 Nota: Todas las dimensiones son valores nominales
 Nota: tutte le dimensioni sono valori nominali

Sleeves, technical information

Douilles, informations techniques » Mantelrohre, technische Daten » Collarines, información técnica »
 Manicotti, informazioni tecniche

Without flange

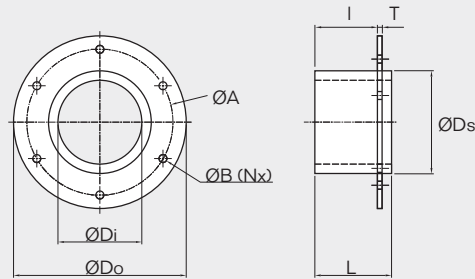
Primed mild steel/acid-proof AISI 316



	SLR 75		SLR 100		SLR 125		SLR 150		SLR 200	
Pos	(mm)	(in)	(mm)	(in)	(mm)	(in)	(mm)	(in)	(mm)	(in)
ØDo	89	3,504	114	4,488	140	5,512	164	6,457	214	8,425
ØDi	76,5	3,012	101	3,976	126	4,961	151	5,945	201	7,913
L	55	2,165	55	2,165	55	2,165	55	2,165	55	2,165

With flange

Primed mild steel/acid-proof AISI 316



	SLFR 70		SLFR 100		SLFR 125		SLFR 150		SLFR 200	
Pos	(mm)	(in)	(mm)	(in)	(mm)	(in)	(mm)	(in)	(mm)	(in)
ØDo	160	6,288	195	7,677	213	8,371	236	9,291	290	11,417
ØDi	71,5	2,815	101	3,976	126	4,961	151	5,945	201	7,913
ØB	9	0,354	9	0,354	9	0,354	9	0,354	9	0,354
(Nx)	4x		6x		6x		6x		8x	
ØA	130	5,118	165	6,496	183	7,205	206	8,110	260	10,236
L	55	2,165	55	2,165	55	2,165	55	2,165	55	2,165
I	43	1,692	43	1,692	43	1,692	43	1,692	43	1,692
ØDs	83	3,268	114	4,488	140	5,512	164	6,457	214	8,425
T	4	0,157	4	0,157	4	0,157	4	0,157	4	0,157